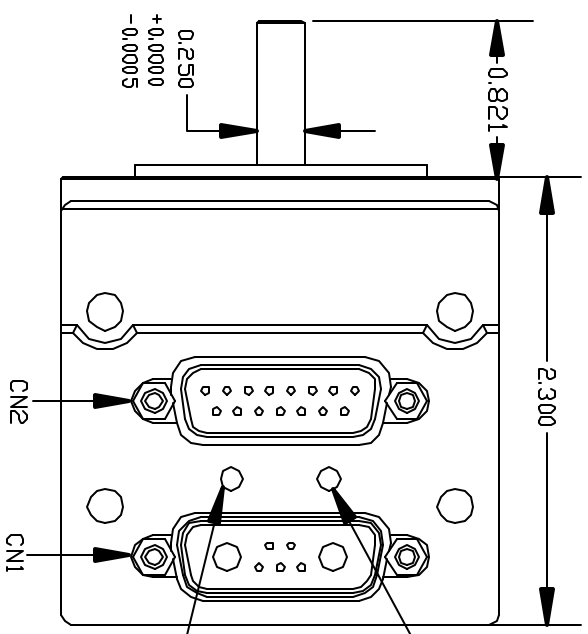
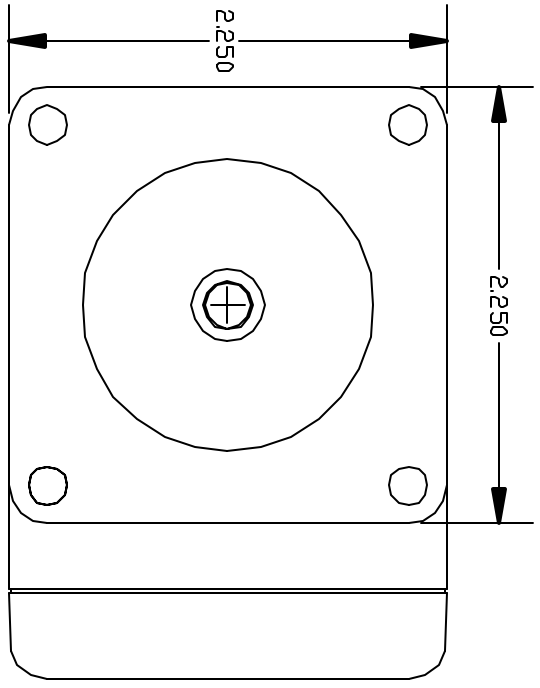


- NOTES: 1) TIED INTERNALLY: TX, CN2 PIN 10 TO CN1 PIN 3
 RX, CN2 PIN 11 TO CN1 PIN 4
 2) TIED INTERNALLY: +5V, CN2 PIN 12 TO CN1 PIN 2
 GND/CN2 PIN 14 TO CN1 PIN A2
 PWR, CN2 PIN 15 TO CN1 PIN A1
 3) FOR HIGH SPEED OR HIGH TORQUE OPERATION USE POWER
 PIN A1 AND A2 ON CN1.
 4) REFER TO DRAWING '2315D' FOR MECHANICAL DIMENSIONS



LED, SERVO-AMPLIFIER
 RED=AMPLIFIER OFF
 (DEFAULT STATED)
 GREEN=AMPLIFIER ON
 OR SERVO-ING IN PLACE

LED, TRAJECTORY
 CLEAR= NOT IN TRAJECTORY
 (DEFAULT STATED)
 GREEN= IN A CONTROLLED
 TRAJECTORY (MOTION)
 OR SERVO-ING IN PLACE

CN2: 15 PIN D-SUB FEMALE CONNECTOR		SOFTWARE SELECTABLE FUNCTIONS	
PIN#	NAME	SPECIAL FUNCTIONS	DIGITAL I/O (TTL) ANALOG INPUT (10 bit)
1	Port A	Step Input	5V 0 to 5V
2	Port B	Direction Input	5V 0 to 5V
3	Port C	Right Limit Input	5V 0 to 5V
4	Port D	Left Limit Input	5V 0 to 5V
5	Port E	Anilink Data	5V 0 to 5V
6	Port F	Anilink Clock	5V 0 to 5V
7	Port G	G-Syn/RS485 Adapter Flow Control Line	5V 0 to 5V
9	ENCA OUT	Encoder A Output	
	ENCB OUT	Encoder B Output	
10	RS232 TX	RS232-Transmit	
11	RS232 RX	RS232-Receive	
12	+5V OUT	+5V Out	
13	GND	Signal Ground	
14	PWR GND	Power Ground	
15	POWER	Power, +24v to 48v	

CN1: 7 PIN COMBD D-SUB MALE CONNECTOR		FUNCTIONS	
PIN#	NAME	FUNCTIONS	
1	Port G	Go-Synchronization Pin	
2	+5V OUT	+5V Out	
3	RS232 TX	RS232-Transmit	
4	RS232 RX	RS232-Receive	
5	GND	Signal Ground	
A1	PWR	Power, +24v to 48v	
A2	PWR GND	Power Ground	

TITLE: 2315D PINDOUT

REV: 3 MATERIAL: CAST ALUMINUM

DATE: 2/28/03 FINISH: BLACK POWDER COAT

TOL: X.XXX +/- .005
 X.XXX +/- .005
 INCHES X.XX +/- .01
 UNLESS OTHERWISE NOTED